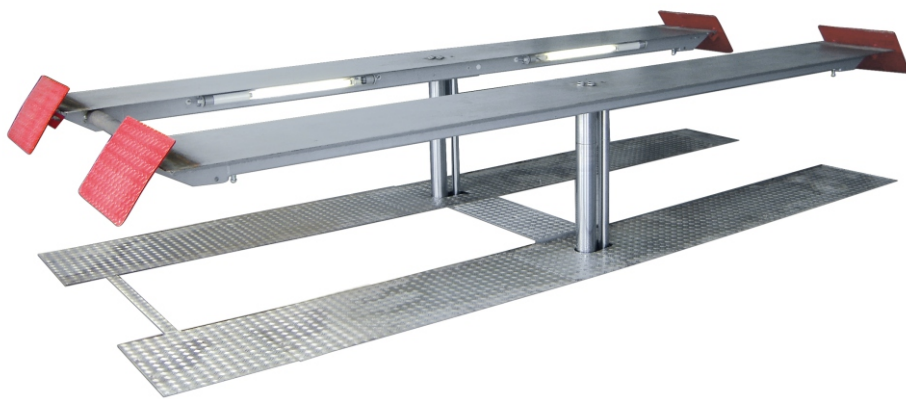


# Hydraulic 2-Ram-Lift

Type: JAB TwinRam 35 A/1500 - TwinRam 50.1 A/1500



With the drive-on platforms this 2-ram lift allows easy lifting of all vehicles from small passenger car up to small trucks, Vans and SUVs.

Due to the drive-on ramps, sports cars with lowering suspension kit can be lifted with the standard platforms. Combined with an integrated axle lift, this solution is specially recommended for the service reception. Illumination at the drive-on platforms allow best illumination level of the vehicle bottom.

Upon request, the lift can be delivered in recessed version including an automatic floor compensation device as well.

## Technical Data

Type	TwinRam 35 A/1500	TwinRam 50.1 A/1500
Lifting capacity	3.500 kg	5.000 kg
Ram distance	1.500 mm	1.500 mm
Effective stroke	1.863 mm	1.929 mm
Lifting time approx.	45 sec.	45 sec.
Electric motor	2 kW	2 kW
Oil filling	10 ltr.	10 ltr.

## JAB-Advantages:

- Foundation cassette and installation frame separately, only screwed together
- Synchronisation through continuous crossbar
- Chromium plated piston bars are abrasive-free and totally sealed
- All force is taken up by the installation frame and led into the ground
- Foundation cassette seal welded for installation into water protected area
- Environmental friendly through low oil quantity and use of bio-degradable hydraulic oils (upon request)
- Drive-on platform with slip-resistant synthetic granulate coating
- Many accessories available for all demands
- Easy to maintain through best possible accessibility
- Highest quality and huge life span
- Advice, after-sales and maintenance - all through JAB

***In case you need any further information, please don't hesitate to contact us!***

***JAB — Made in Germany***

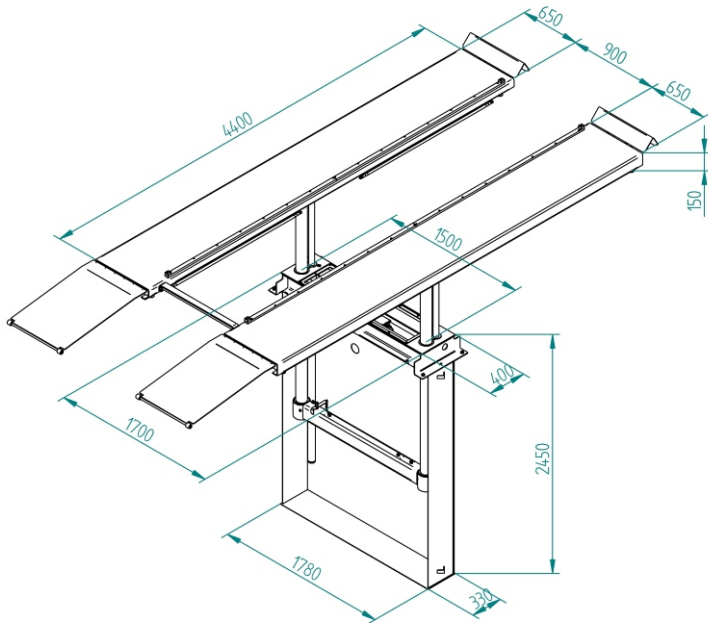


J.A. Becker & Söhne GmbH & Co KG  
Postfach 1151 · D-74148 Neckarsulm  
Telephone +49 (0) 7132 367-0 · Telefax +49 (0) 7132 367-289  
E-Mail: [info@jab-becker.de](mailto:info@jab-becker.de) / [www.jab-becker.de](http://www.jab-becker.de)

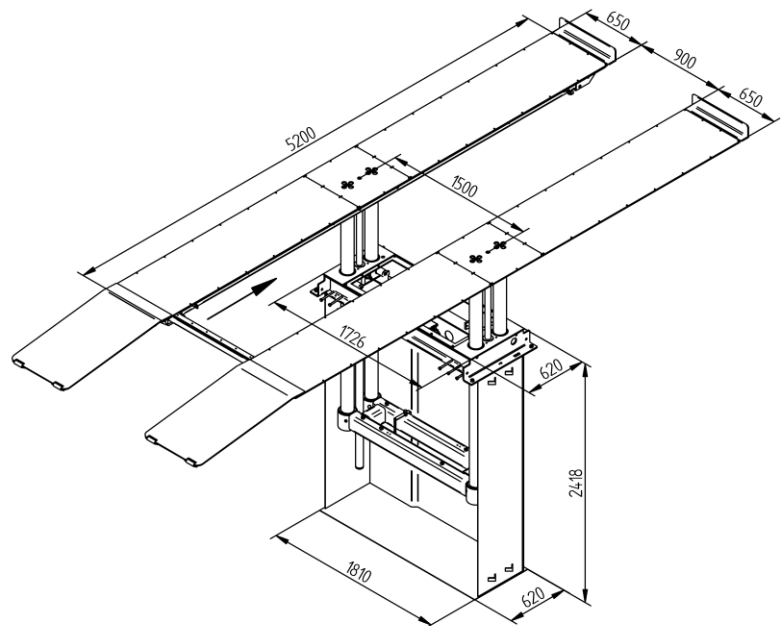


# Detailed dimensions

Type: JAB TwinRam 35 A/1500 - TwinRam 50.1 A/1500



## TwinRam 35 A/1500



## TwinRam 50.1 A/1500

Technical changes and modifications reserved!  
Several executions available!



J.A. Becker & Söhne GmbH & Co KG  
Postfach 1151 · D-74148 Neckarsulm  
Telephone +49 (0) 7132 367-0 · Telefax +49 (0) 7132 367-289  
E-Mail: [info@jab-becker.de](mailto:info@jab-becker.de) / [www.jab-becker.de](http://www.jab-becker.de)



02/2018